

cocktails

FLOATING FLOWER 19

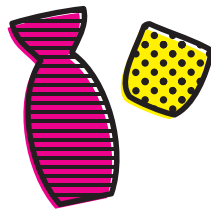
Soto Junmai Daigingo Sake, Celery Juice, Elderflower Liqueur, Flower Garnish

MOUNTAIN SOUR 20

Iwai Japanese Whisky, Zirbenz Stone Pine Liqueur, Row Eleven Pinot Noir Float

A DRY HEAT 19

Iwai Japanese, Carpano Antica Vermouth, Hellfire Bitters, Sage-Smoked Pork Rind Garnish



beer

KIRIN LIGHT, JAPAN 9

ASAHI SUPER DRY, JAPAN 9

ECHIGO KOSHIHIKARA 500ML 15

HITACHINO WHITE NEST, JAPAN 13

OZE NO YUKIDOKI IPA 17

sake by the glass 3 OZ.

JUNMAI SHU, HAIKU TOKUBETSU 11

Light, Herbaceous, Pear

JUNMAI GINJO, MABOROSHI 13

Delicate, Green Apple, White Pepper

JUNMAI DAIGINJO, WAKATAKE SHUZO "DEMON SLAYER" 17

Pretty, Floral, Soft

JUNMAI GINJO NIGORI (CLOUDY), SHICHI HON YARI 16

Pineapple, Papaya, Coconut

YAMA YUZU THE TSUKASABOTAN BREWERY 16

Sweet, Citrus, Aromatic

japanese whisky

HIBIKI HARMONY 14

HIBIKI 17 YEAR 50

IWAI 12

IWAI TRADITION 13

NIKKA COFFEY GRAIN 14

NIKKA TAKETSURU 12 YEAR 15

THE YAMAZAKI SINGLE MALT 12 YEAR 25



american whiskey

ALBANY DISTILLING 'IRONWEED BOURBON', NY 19

HIGH WIRE 'REVIVAL SORGHUM', SC 15

LOW GAP '2 YEAR RYE', CA 17

MCKENZIE 'RYE', NY 13

RIEGER'S 'KANSAS CITY WHISKEY', MO 13

TATOOSH DISTILLERY 'SINGLE MALT', WA 13

UNION HORSE 'RESERVE STRAIGHT BOURBON', KA 13

WASMUND'S 'SINGLE MALT', VA 15

WILLET FAMILY BOURBON, KY 15

WHIPPERSNAPPER, OR 13

WYOMING WHISKEY, WY 14

flights 1 OZ. EACH

SAKE 16

MABOROSHI, WAKATAKE SHUZO 'DEMON SLAYER', SHICHI HON YARI

JAPANESE WHISKY 20

HIBIKI HARMONY, IWAI TRADITION, NIKKA TAKETSURU 12 YR

AMERICAN WHISKEY 21

HIGH WIRE 'REVIVAL SORGHUM', MCKENZIE 'RYE', WILLET FAMILY BOURBON

sake by the bottle

JUNMAI SHU

FUKUCHITOSE YAMAHAI "HAPPINESS OWL" 65
Savory, Earthy, Pumpkin Spice (720ml)

SEIKYO TAKEHARA 61

Soft, Supple, Smooth (720ml)

TAIHEIKAI TOKUBETSU 67

Rich, Nutty, Round (720ml)

TENRANZAN KOTEN "OLD HEAVEN" 65

Apple, Lemon, Earthy (500ml)

JUNMAI GINJO

YOSHINOOGAWA "GENSEN KARAKUCHI" 68
Floral, Pear, Mineral (720ml)

ISOJIMAN 78

Fresh, Aromatic, Pretty (720ml)

SHIMIZU-NO-MAI "PURE DAWN" 73

Orange, Lychee, Fuji Apple (720ml)

FRUIT SAKE

MOONSTONE / PLUM 33

Light, Plum, Almond (750ml)

YAMA YUZU, TSUKASABOTAN BREWERY 98

Sweet, Citrus, Aromatic (720ml)

JUNMAI DAIGINJO

JOTO "THE ONE WITH CLOCKS" 54

Aromatic, Fruity, Clean (300ml)

TEDORIGAWA KINKA "GOLD BLOSSOM" 73

Delicate, Pear, White Flowers (720ml)

"KAKUREI" DAIGINJO, AOKI SHUZO 114

Soft, Mineral, Apple, (720ml)

JUNMAI GINJO NIGORI (CLOUDY)

DEWATSURU 60

Rich, Sweet, Robust (720ml)

HITORIMUSUME 65

Dry, Honeysuckle, Pretty (720ml)

SHIMIZU NO MAI "PURE SNOW" 25

Melon, Cucumber, Ginger (300ml)

JUNMAI SPARKLING

HARUSHIKA "TOKIMEKI" 51

Savory, Off-Dry, Zesty (300ml)

ZIPANG 18

Lively, Bright, Tropical Fruits (250ml)

